

Washington Timbers Forrest B02

Washington Timbers

Vancouver, WA

B02 total strength=480

attack=0.38 defense=0.29

fall league = OPL First Division U11, OPL Direc

alt names used:

Washington Timbers B02 Forrest

WTSC Forrest

WTFC Forrest B02

Washington Timbers B02 Forest

WA Timbers B02 Forest

Venues played:

Cascadia Challenge Silver U11

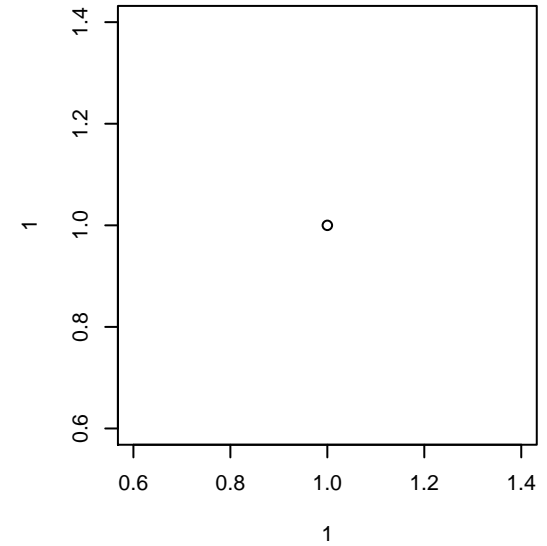
PCU Summer Classic BU11 Silver

Mt Hood Challenge BU11 11v11 Gold

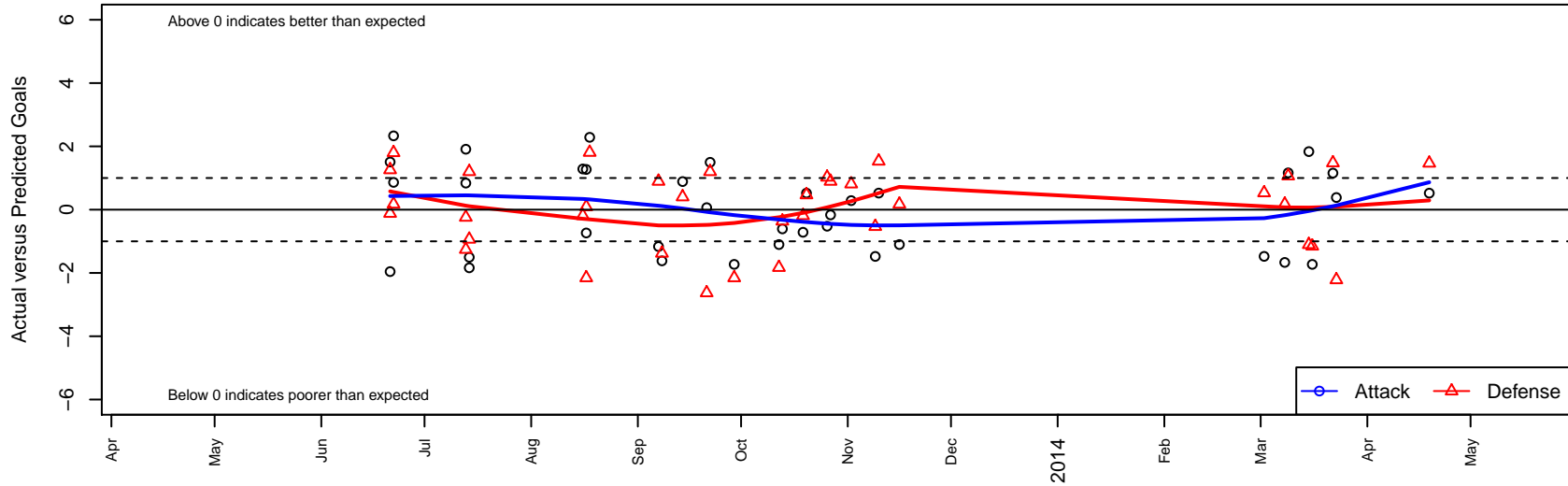
OPL First Division U11

OPL Directors Cup Gold U11

Spr OYS B02 Spring Red



Washington Timbers Forrest B02
Dots are actual minus expected GF (blue circles) and GA (red triangles).
Blue line is smoothed change in attack strength. Red is smoothed change in defense strength.



	date	home		away		venue	pred.home	pred.aw
555	2014-04-19	Washington Timbers Forrest B02	2	PCU Red B02	0	Spr OYS B02 Spring Red	1.48	1.47
319	2014-03-23	LASC Guereros B02	7	Washington Timbers Forrest B02	1	Spr OYS B02 Spring Red	4.78	0.62
155	2014-03-22	Timber Barons B02	0	Washington Timbers Forrest B02	4	Spr OYS B02 Spring Red	1.48	2.84
396	2014-03-16	Capital FC Timbers Black –was Red B02	3	Washington Timbers Forrest B02	0	Spr OYS B02 Spring Red	1.85	1.73
558	2014-03-15	Washington Timbers Forrest B02	5	BSC Portland Gold B02	2	Spr OYS B02 Spring Red	3.17	0.90
201	2014-03-09	Washington Timbers Forrest B02	4	Westside Timbers Mundial B02	0	Spr OYS B02 Spring Red	2.84	1.07
357	2014-03-08	Washington Timbers Forrest B02	0	Eastside Timbers White B02	1	Spr OYS B02 Spring Red	1.67	1.17
363	2014-03-02	Westside Timbers Copa TS B02	1	Washington Timbers Forrest B02	0	Spr OYS B02 Spring Red	1.53	1.48
352	2013-11-16	THUSC Beryllium Black B02	2	Washington Timbers Forrest B02	0	OPL Directors Cup Gold U11	2.17	1.10
397	2013-11-10	Washington Timbers Forrest B02	2	Westside Timbers Copa TS B02	0	OPL Directors Cup Gold U11	1.48	1.53
389	2013-11-09	Washington Timbers Forrest B02	0	PCU Red B02	2	OPL Directors Cup Gold U11	1.48	1.47
577	2013-11-02	Santos FC Mercury B02	1	Washington Timbers Forrest B02	2	OPL Directors Cup Gold U11	1.81	1.71
167	2013-10-27	Washington Timbers Forrest B02	3	BSC Portland Gold B02	0	OPL First Division U11	3.17	0.90
398	2013-10-26	Washington Timbers Forrest B02	2	Foothills SC Celtic B02	0	OPL First Division U11	2.52	1.02
242	2013-10-20	PCU Red B02	1	Washington Timbers Forrest B02	2	OPL First Division U11	1.47	1.48
757	2013-10-19	Santos FC Mercury B02	2	Washington Timbers Forrest B02	1	OPL First Division U11	1.81	1.71
264	2013-10-13	Washington Timbers Forrest B02	1	Bend FC Timbers Red B02	2	OPL First Division U11	1.61	1.64
714	2013-10-12	THUSC Beryllium Black B02	4	Washington Timbers Forrest B02	0	OPL First Division U11	2.17	1.10
250	2013-09-29	Capital FC Timbers Black –was Red B02	4	Washington Timbers Forrest B02	0	OPL First Division U11	1.85	1.73
326	2013-09-22	Washington Timbers Forrest B02	4	HSC United B02	0	OPL First Division U11	2.50	1.20
795	2013-09-21	Washington Timbers Forrest B02	2	Aloha United Porto B02	4	OPL First Division U11	1.94	1.37
19	2013-09-14	Southside SC Chaos B02	0	Washington Timbers Forrest B02	5	OPL First Division U11	0.40	4.11
02	2013-09-08	Washington Timbers Forrest B02	0	River Plate SC Tiburones B02	4	OPL First Division U11	1.62	2.62
79	2013-09-07	BSC Portland Gold B02	0	Washington Timbers Forrest B02	2	OPL First Division U11	0.90	3.17
79	2013-08-18	Santos FC Mercury B02	0	Washington Timbers Forrest B02	4	Mt Hood Challenge BU11 11v11 Gold	1.81	1.71
49	2013-08-17	Washington Timbers Forrest B02	0	Capital FC Timbers Red –was Black B02	5	Mt Hood Challenge BU11 11v11 Gold	0.74	5.09
72	2013-08-17	Washington Timbers Forrest B02	3	Capital FC Timbers Black –was Red B02	4	Mt Hood Challenge BU11 11v11 Gold	1.73	1.85
50	2013-08-16	Santos FC Mercury B02	2	Washington Timbers Forrest B02	3	Mt Hood Challenge BU11 11v11 Gold	1.81	1.71

	date	home		away		venue	pred.home	pred.away
3159	2013-07-14	HSC United B02	0	Washington Timbers Forrest B02	1	PCU Summer Classic BU11 Silver	1.20	2.50
3160	2013-07-14	Washington Timbers Forrest B02	1	Westside Timbers Mundial B02	2	PCU Summer Classic BU11 Silver	2.84	1.07
2903	2013-07-13	Washington Timbers Forrest B02	6	THUSC Beryllium Green B02	1	PCU Summer Classic BU11 Silver	4.09	0.76
2905	2013-07-13	Washington Timbers Forrest B02	4	NEU Barca Blue B02	2	PCU Summer Classic BU11 Silver	3.16	0.74
1758	2013-06-22	Westside Timbers Copa B03	0	Washington Timbers Forrest B02	3	Cascadia Challenge Silver U11	1.80	2.14
1761	2013-06-22	Washington Timbers Forrest B02	4	Eastside Timbers White B02	1	Cascadia Challenge Silver U11	1.67	1.17
1639	2013-06-21	Washington Timbers Forrest B02	1	Eastside Timbers Green B02	1	Cascadia Challenge Silver U11	2.96	0.88
1641	2013-06-21	Westside Timbers Samba B02	1	Washington Timbers Forrest B02	3	Cascadia Challenge Silver U11	2.26	1.49